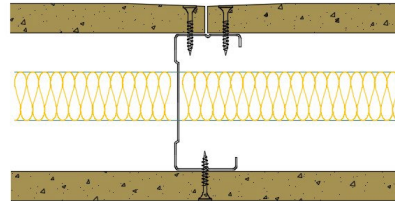


PSHD70-K-63(25) - SPEEDLINE System Data Sheet - Version V1 (24-10-23)

SPEEDLINE 70mm Heavy Duty 'C' Stud Partition
@600mm Ctrs, with Knauf 15mm Impact Panel
each side, 25mm APR



System Performance Breakdown

Fire Resistance:

BS476 Part 22:1987:

Test Ref:

Max Height:

Thickness:

Duty Grade: BS 5234: Part 2:1992:

Sound Insulation:

60/60 Minutes (Integrity/Insulation).

BRE Report P102396-1011B

Refer to Speedline Specification Clause

102 mm. (At Base Track, Excluding Finishes)

Severe - Annexes A-F

43 R_w dB, Date Tested or Assessed Against - 23/08/2008

SRL Sound Research
Laboratories Limited
Holbrook House, Little Walsingham,
Sudbury, Suffolk CO10 0TH
Tel: (01787) 247595 Fax: 01787 248420
e-mail: srl@soundresearch.co.uk

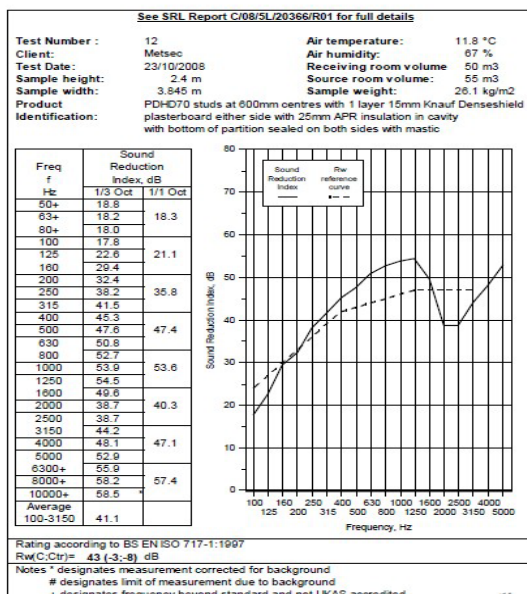


Test Certificate No. 5339

Contract: C/08/SL/20366

Page: 1 of 1

Date: 27 January 2009



TESTED AT ONE OF THE UKAS
ACCREDITED LABORATORIES
BELOW

B.T.C
(H-Ref on Graph)

B.R.E

AIRO

S.R.L



George Thomson
Project Engineer

Trevor Hickman
Technical Manager

SPEEDLINE Drywall Systems, Adsetts House, 16 Europa View, Sheffield Business Park, Sheffield, S9 1XH.

Tel: 0114 231 8030.

Email: enquiries@speedlinedrywall.co.uk

(As per the requirements set out in ISO/IEC 17025:2017 regarding test data the results stated have been carried out by voestalpine Metsec plc as part of the contract to supply Speedline Metal Sections to SIG Plc)